

## **IQF (Individually Quick Frozen) Greenlip Abalone Meat**

Species: Greenlip (*Haliotis Laevigata*)  
Properties: Wild, ocean caught, fully bled, IQF, glazed  
Standard Packaging: 10kg net per poly box  
Grade: First grade: XL 1-2 351g+  
Sizes: 1-2/lb (230g-350g)  
2-3/lb+ (180-229g)  
2-3/lb- (150-179g)  
3-4/lb (115-149g)  
Second Grade: ungraded.



## **IQF (Individually Quick Frozen) Blacklip Abalone Meat**

Species: Blacklip (*Haliotis Rubra*)  
Properties: Wild, ocean caught, fully bled, IQF, glazed  
Standard Packaging: 10kg net per poly box  
Grade: First grade  
Sizes: 1-2/lb (230g+)  
2-3/lb (150-229g)  
3-5/lb (90-149g)  
No Second Grade



## **FRESH Chilled Greenlip Abalone Meat**

Grading: To customers specifications and subject to seasonal conditions.



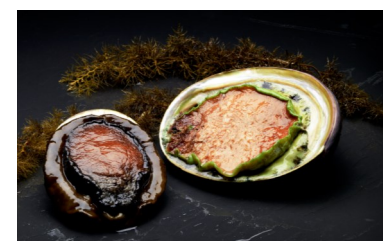
## **FRESH Chilled Blacklip Abalone Meat**

Grading: To customers specifications and subject to seasonal conditions.



## **LIVE Blacklip and Greenlip Abalone Meat:**

Grading: To customers specifications and subject to seasonal conditions.



## Par Boiled Frozen Abalone Meat:

Available in Blacklip or Greenlip. Produced to order per customers specifications.

## Canned Abalone

Species: Blacklip (*Haliotis Rubra*)  
Properties: Wild, ocean caught, fully bled  
425g + 850g Gross weight various counts/drained weights per can available



## Heat Sterilised Vacuum Packed Abalone

Species: Blacklip (*Haliotis Rubra*)  
Properties: Wild, ocean caught, fully bled  
Standard packing: 10kg net per carton  
Grade: First Grade  
Abalone per vac-pack: Net weight per vac-pack

1	110-150g
1	150-190g
1	190-240g
1	240-290g
2	250g
3	500g
4	500g



## Abalone Shells

Species: Greenlip (*Haliotis Laevigata*)  
Properties: Wild graded  
Standard packing: 20 kg net per carton  
Grade: A, B, C & D

